



Lifting power for the future

Truck cranes for forestry

Cranab  **Slagkraft**

FASSI GROUP



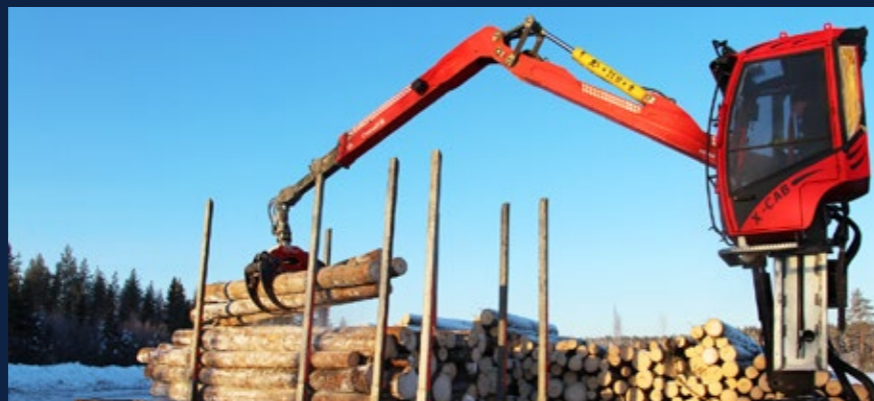
CRANES | FORESTRY TRANSPORT

For demanding users

Cranab truck cranes for timber transport are optimised and adapted to suit every step of the operation. The cranes are available in L and Z versions and in different sizes and reaches.

The cranes are made for the demanding user. Our reliable cranes are aimed at professional operators who want to work quickly and safely with efficient loading and unloading cycles. They are suitable for anyone in need of a strong, robust low-weight crane with high performance, well-planned geometry and low power losses.

Cranab cranes are available with flexible operator environments. We offer open operator positions with various placements, such as operator's position with adjustable canopy. For anyone looking for the very best comfort and weather protection, we offer one of the best cabs on the market. We also offer several control system solutions to meet the needs of every user.



OUR CRANES



TL12 • Robust L-design cranes, newly updated with next generation technology and modern solutions. Available in single or double telescope versions and with alternative reaches. The TL-crane can be laid extended at the top of the load for an effective and rapid move to the next work site.



TZ13 • TZ15 • TZ16XP A perfect choice for the most common timber handling tasks. Modern, versatile and flexible cranes with maximum reach between 8.5 and 10.5 metres and working pressure between 26 and 31.5 MPa. They are available in several versions like a single or double telescope crane or with extra lifting power. The TZ16XP cranes has a working pressure of 31.5 MPa.



TZ18 • TZ20 • TZ22XP Powerful Z-cranes for the most demanding tasks. Available in three different sizes. Our most robust and muscular TZ-cranes, designed to handle the heaviest lifts. Equally as efficient and fast as the smaller cranes, and with the same great qualities. Maximum reach from 8.3 to 10.2 metres and working pressure between 26 and 31.5 MPa.

→ FOCUS ON DRIVER ENVIRONMENT

Good to know...

... we offer operator positions in alternative locations, weather protection and one of the best cabins on the market.

Learn more about operators' positions on page 10-11.



”

The crane has smooth, accurate movements, and is strong throughout its range of motion.

Daniel Fjärsmans
Insjöns timmertransporter AB



TL12

L-design truck cranes

Cranab's L-design truck crane always puts you one step ahead: It is powerful, versatile and flexible, service-friendly and safe.

MODERN TECHNOLOGY

The TL crane series is upgraded with next generation technology. The reach is optimised, the internal hose routing is redesigned, the hydraulic connections are easier to access, the crane tip is angled and more compact.

EASY TO LOAD

The TL crane is practical in its design and is offered in two different reaches 8.1 or 9.7 metres. Loading is efficient due to the extensive maximum reach. This means that the operator can reach everywhere without having to reposition the truck or drive too close to the timber pile. The crane can also be laid extended at the top of the load for a rapid move to the next site.

The cranes can be equipped with different types of operator's stations, different forms of lighting and a smart control system for several functions.

ULTRASOUND INSPECTIONS

Because sitting in the operator's position must be absolutely safe, Cranab conducts a mandatory ultrasound inspection of all critical welded joints. Our manufacturing process standards require the area surrounding the crane column and mounting to be uncompromisingly hard wearing. We inspect the welded joints with ultrasound to make sure they meet our high standards.

INTERNAL ROUTING

All lines through the boom system are routed internally. 2nd boom cylinder lines protected by external cover. Easy access to hydraulic connections.

LINKAGE

Linkage between post and main boom allows for lower crane height. Max lifting torque increased. Reduced friction. Torque link is available as an option.

SLEWING MOTOR

The crane's slewing motor with double slewing systems gives a 425 degree slewing angle. This means that the crane has a very good slewing ability in several directions. The geometry of the slewing motor and several components are taken from the forwarder crane technology.

PINS OF THE HIGHEST CLASS

The pins are of a good size. They are nitrocarburised for improved durability and maximum corrosion protection. Low friction means reduced wear on all bushings.

INTEGRATED PARKING SUPPORT

Protects hoses when parking on loaded truck.

SINGLE OR DOUBLE TELESCOPE

To meet our customer's demands, the TL12 cranes are available with both single and double telescoping for maximum agility and the best reach.

COMPACT CRANE TIP

Angled down for improved movement range. Open design reduces risk of damaging hoses in extreme positions. Hydraulic block allows for a variety of connection solutions. WEO Plug-In connection as standard.

SLIDE PADS

Slide blocks adjustable from the outside of the outer boom. Adjustments can easily be made from outside using a hex key to make the crane steady and stable.

COMPACT AND OPTIMISED TELESCOPIC BOOM

Rear idler wheels further back - easier access during hose changes.

→ DID YOU KNOW THAT...

... A three-point yoke makes a difference

Cranab's truck cranes are equipped with a three-point yoke that sits on the stabiliser beam. The three-point yoke counteracts torsion in the truck chassis.

... Smooth damping

The cranes are equipped with end-position damping in the slewing motor. This enables smooth braking at each end position, which gives reduced wear and good operational characteristics.

→ LEADING REACH

EXCELLENT REACH

The TL12.1 is a single-telescope crane with a reach of 8.1 metres, while the TL12.2 is a double-telescope crane with the greatest reach, namely 9.7 metres. The reach is optimised for all types of timber handling work and for today's trucks.



TZ13 / TZ15 / TZ16XP / TZ18 / TZ20 / TZ22XP

Z-version truck cranes

With Cranab's Z-crane, operators are productive right from the outset. The wide range of cranes includes several designs and reaches. TZ13, TZ15 and TZ16XP are available in six versions, which means the models meet the needs of most users. If even more power and strength are required, there is the muscular giants TZ18, TZ20 and TZ22XP.

UP AND RUNNING IN NO TIME

Our Z-crane are quickly extendable and retractable. World-class hydraulics give responsive, strong cranes and leading operational characteristics. With the carefully adapted geometry, as well as the crane's other components and solutions, the foundation is laid for a very efficient timber handling.

OPTIMISES LOADING SPACE

Thanks to its compact design and the Z-crane's parking mode, you can load to the maximum every time. The ability to fold the Z-crane onto the back of the truck is its

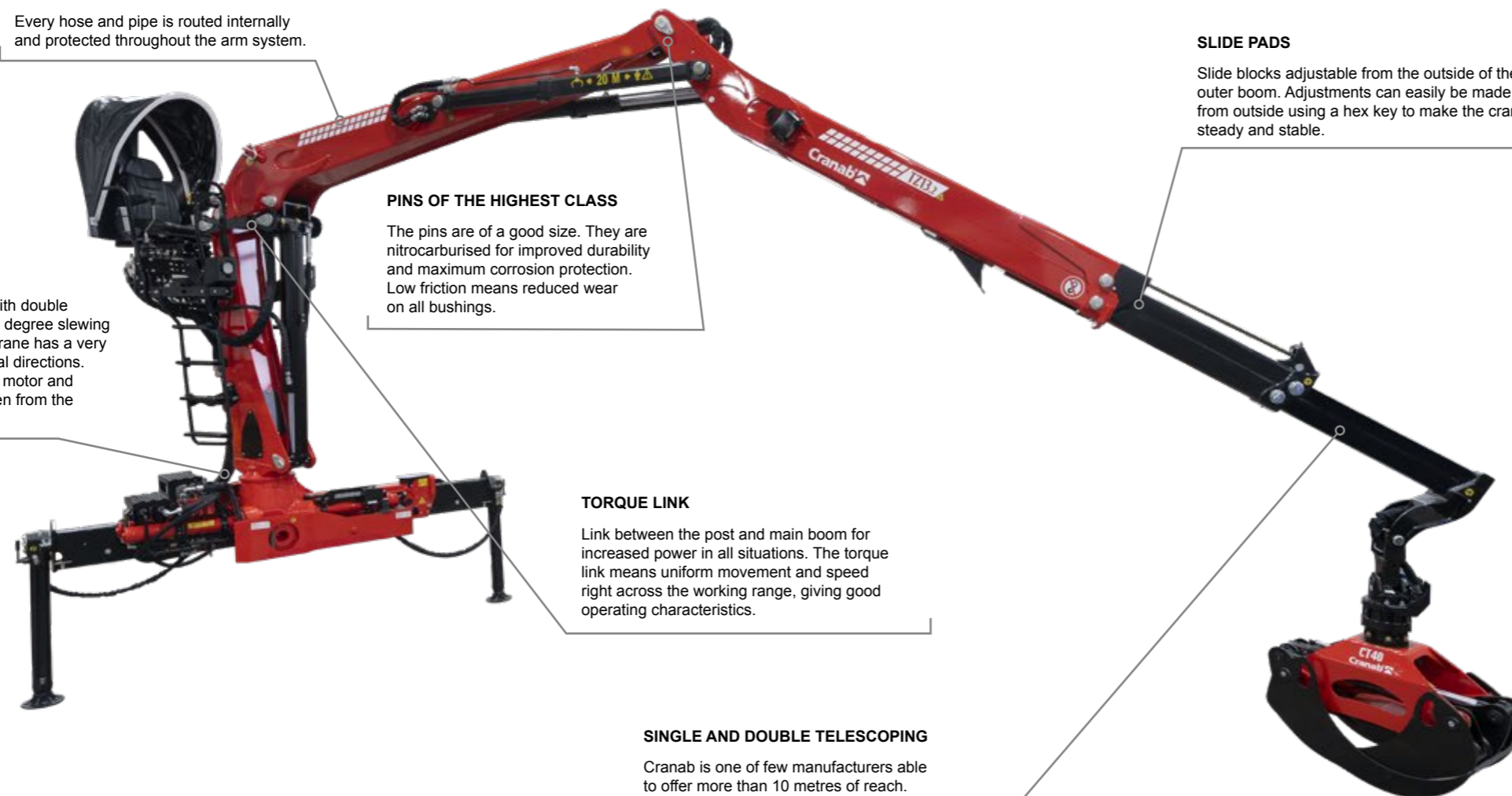
great advantage. With the Z-crane, it is therefore possible to put a full load on the truck without losing load capacity.

ULTRASONIC INSPECTIONS

The manufacture of the cranes is meticulous and welding is substantially robotised. We have introduced a mandatory ultrasound inspection of critical welded joints around the crane column. We inspect the welded joints with ultrasound to make sure they meet our high standards. Sitting in the operator's position must be absolutely safe.

INTERNAL ROUTING

Every hose and pipe is routed internally and protected throughout the arm system.



SLEWING MOTOR

The crane's slewing motor with double slewing systems gives a 425 degree slewing angle. This means that the crane has a very good slewing ability in several directions. The geometry of the slewing motor and several components are taken from the forwarder crane technology.

PINS OF THE HIGHEST CLASS

The pins are of a good size. They are nitrocarburised for improved durability and maximum corrosion protection. Low friction means reduced wear on all bushings.

TORQUE LINK

Link between the post and main boom for increased power in all situations. The torque link means uniform movement and speed right across the working range, giving good operating characteristics.

SINGLE AND DOUBLE TELESCOPING

Cranab is one of few manufacturers able to offer more than 10 metres of reach. The TZ cranes are available with both single or double telescoping for maximum agility and the best reach.

SLIDE PADS

Slide blocks adjustable from the outside of the outer boom. Adjustments can easily be made from outside using a hex key to make the crane steady and stable.

→ DID YOU KNOW THAT...

... The telescopic effect is unique

Cranab's unique design of the TZ13, TZ15 and TZ16XP allows the cranes to reach further than other cranes on the market. The outer boom is completely straight and accommodates longer booms. This gives it a much better telescoping effect and increases reach.

... TZ22XP is the strongest of all

TZ18, TZ20 and TZ22XP crane models are designed to be used for the toughest of tasks. The cranes are robust and impressively rated. They can handle the largest timber and heaviest material. The XP version is an extra powerful crane ready for the most heaviest lifting tasks.

→ FLEXIBLE RANGE

REACHES UP TO 10.5 METRES

Cranab is one of few manufacturers able to offer more than 10 metres of reach. The reach of this range of cranes is large.

The TZ13, TZ15 and TZ16XP cranes has a maximum reach of 8.5 metres as single telescope cranes. As double telescope cranes the reach is impressive 10.5 metres.

The muscular TZ18, TZ20 and TZ22XP cranes has a maximum reach of 8.3 metres as single telescope cranes, and 10.2 metres as double telescope cranes.



GRAPPLES | ON-ROAD

Cranab's on-road grapple series is designed and engineered especially for truck crane work.

The grapple series comprises three sizes, the CT35, CT40 and CT50. While it is based on our extensive experience of grapples for forestry machines, the series is a further development specially engineered for truck cranes.

When used together with Cranab's TL and TZ crane ranges, the grapples form a complete system optimised and carefully tested for their area of use.

CORRECTLY DIMENSIONED

For road haulage, lower weight is always in focus. When developing the grapples, we focused a lot on weight optimisation and dimensioning without compromising on performance, reliability and ease of operation. Thanks to meticulous work and smart choices, we have been able to reduce material thickness in the grapples and make them narrower than others.

LOADING AND UNLOADING

Like our off-road grapples, the on-road grapples

penetrate log piles easily. They have very good roll-in properties, are easy to work with and handle the timber efficiently.

Grapples used on forwarders are designed for sustained operation and demanding jobs. Grapples on truck cranes operate at a completely different frequency. Truck grapples are used for loading and unloading log piles. Our on-road grapples are optimised for their area of use.

CT35



Small, versatile and compact

The **CT35** is the smallest grapple in the product range. It's a very compact and agile grapple that does the job just as well as the larger models but on a smaller scale.

The grapple is suitable for all applications where smaller trucks and cranes are used and there is no need to pick up large volumes in each grab.

CT40



Grapple that suits most

The **CT40** is our standard size, and this grapple model is suitable for the overwhelming majority of users and truck cranes.

This grapple combines performance, weight and lifting capacity in a very good way. Like its stable mates, the CT40 has great roll-in characteristics, high penetration and wide opening.

CT50



Our biggest on-road grapple

The **CT50** is unique to the truck range and designed to maximize each grab load and maintain the highest tempo. It grabs large volumes at a time.

This grapple size is popular throughout Europe, and the CT50 is unequalled at meeting the needs of the most demanding users and the toughest jobs.

OPERATOR'S POSITION

Without the operator nothing gets done, and every user is unique. We've taken that into account.

Operating the crane and grapple equipment is part of the operator's everyday life. Because the operator's position must be safe, ergonomic and enable rapid start-up, we have created several alternative solutions.

First, choose whether the operator's position should be open or equipped with a cab. Depending on the size of the crane, the nature of the work and the truck model, the open operator's position can be located centrally or to the right or left of the crane column.

The cab is mounted to the left as standard, but can also be ordered for right-hand installation. While the cab provides the best comfort and weather protection, the open operator's position can be supplemented with a canopy and heated seat for an optimum operator environment.

There are several lever options. There are various joystick and lever options for both mechanically and electrically controlled cranes.



Operator's cab

Our operator's cab comes with a stainless steel body. The cab is a modern, ergonomic solution that creates a comfortable, protected and safe operator environment in all weathers and climatic conditions. The quick height adjustment of the cab means visibility is always optimal. A protective windscreen blind is available as an option.

Comfort and at-a-glance controls

The cab has a comfortable, ergonomic operator's seat and well-placed controls. The cab can be fitted with mechanical or electrical controls.



Open operator's position with multiple options

Great flexibility. The open operator's position is available with either mechanical or electrical controls.

The seat can be located to the right or left of the crane column or centrally. For TL12, the centrally mounted seat is available in two versions, either with the seat facing straight ahead or eight degrees off-centre.

For best comfort, the open operator's position can be equipped with a heated seat and weather protection against rain, wind, snow and strong sunlight. Both operator's seat armrests are foldable and extra lighting can be selected for installation on the outer boom and at the operator's position.

The operator's seat height is more than ample, and provides for excellent visibility. Thus there is excellent visibility across the entire work area, which enhances safety and makes work easier.

There are solid, anti-slip steps height adjusted for ease of entry.

The crane's sturdy railings and hand holds make climbing safe.

Joysticks and levers

There are several lever options. There are various joystick and lever options for both mechanically and electrically controlled cranes.



+ Entertainment

The driver's cab can be equipped with a radio package (DAB and FM) including USB, aux jacks and two speakers.

+ Lighting

Forward-facing, roof-mounted LED light ramp (120W, 8800 lumens) and a rearward-facing LED light mounted on the lower part of the cab are available as options.

+ Heating & cooling

A water heater, diesel heater and an air conditioner are three options that increase comfort.

+ Colour scheme

The cab can be painted in any colour. Colour selection is based on RAL codes.

+ Engine control

Special motor controls that govern start, stop and speed adjustment, are available as options.

OPTIONS & FEATURES

It's important for us that your truck crane meets your expectations. Together, we'll tailor a solution that meets your specific needs perfectly.

Our cranes have the highest standards right from the outset. But there are still opportunities to equip the crane a little extra so you get it the way you want it.

CONTROL SYSTEM AND LEVERS

Depending on the crane model and operator's environment, we offer different kinds of control systems. You can choose mechanical 2+2, mechanical 4+4 or electrical controls.

If you chose an electrically operated TL12 crane with driver's cab, a clear LCD screen shows the crane settings, among other things.



The crane has a good lifting geometry. We load and unload many times in the space of one day and the crane's geometry makes sure each work cycle flows smoothly.

Micke Andersson | EHAB Åkeri

→ MAKE THE RIGHT CHOICE RIGHT AWAY

Contact us or a dealer for personal service when choosing your equipment.

You can find your nearest dealer at www.cranab.se



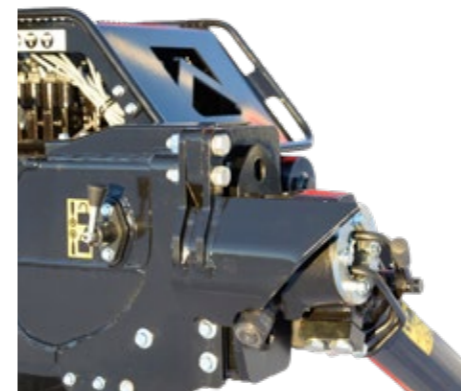
Support leg valve
Electrically/manually operated. 4-6-8 sections suitable for single-circuit, dual-circuit and LS systems.



Activation lock
Safety device when operating the stabiliser leg valve.



Colour options
The standard colour is red (RAL 3020) but the main boom and outer boom may be ordered in any RAL colour as an option.



Retraction of support legs
180 degree support leg retraction with external hose routing or mechanical retraction 30, 45 or 60 degrees.

Cranab Smart Control

As an option, we offer Cranab Smart Control, CSC, a system for settings and monitoring. With CSC, you can control the truck's functions directly from the cab. A practical, economical and sustainable way. With CSC, you can control the lighting, air suspension, PTO and work rpm. You can also track and monitor the load weight of the truck and trailer in real time.

Control more than the crane
Start and stop the truck's engine and control its rpm.

Lighting

Several lighting options are available for illuminating the work area.

For example:

+ Outer boom: Forward-facing LED lighting on either side of the crane boom.

+ Driver's cab: Powerful, forward-facing, roof-mounted LED light ramp and a rearward-facing LED light mounted on the lower rear part of the cab

+ Open operator's position: Front-facing LED lamps.



Note: CSC is only available for TL12 cranes with cab and electric controls (joysticks).

OVERVIEW CRANES



TL12								LS	1K	2K	Weight	Telescope
TL12.1	8,1	115 kNm	8,1 m	1.61 m	425°	29,3	26	120-160	80-100	2 x 70	2445 kg*	Single
TL12.2	9,7	109 kNm	9,7 m	3.22 m	425°	29,3	26	120-160	80-100	2 x 70	2515 kg*	Double

TZ13								LS	1K	2K	Weight	Telescope
TZ13.1	8,5	118 kNm	8.45 m	2.05 m	425°	25,0	26	120-160	80-100	2 x 75	2380 kg**	Single
TZ13.2	10,5	112 kNm	10.45 m	4.0 m	425°	25,0	26	120-160	80-100	2 x 75	2460 kg**	Double

TZ15								LS	1K	2K	Weight	Telescope
TZ15.1	8,5	132 kNm	8.45 m	2.05 m	425°	25,0	28,5	120-160	80-100	2 x 75	2380 kg**	Single
TZ15.2	10,5	128 kNm	10.45 m	4.00 m	425°	25,0	28,5	120-160	80-100	2 x 75	2460 kg**	Double

TZ16XP								LS	1K	2K	Weight	Telescope
TZ16XP.1	8,5	148 kNm	8.45 m	2.05 m	425°	25,0	31,5	120-160	80-100	2 x 75	2380 kg**	Single
TZ16XP.2	10,5	144 kNm	10.45 m	4.00 m	425°	25,0	31,5	120-160	80-100	2 x 75	2460 kg**	Double

TZ18								LS	1K	2K	Weight	Telescope
TZ18.1	8,3	182 kNm	8.3 m	1.85 m	425°	29,3	26	120-160	80-100	2 x 75	2910 kg**	Single
TZ18.2	10,2	171 kNm	10.15 m	3.70 m	425°	29,3	26	120-160	80-100	2 x 75	3000 kg**	Double

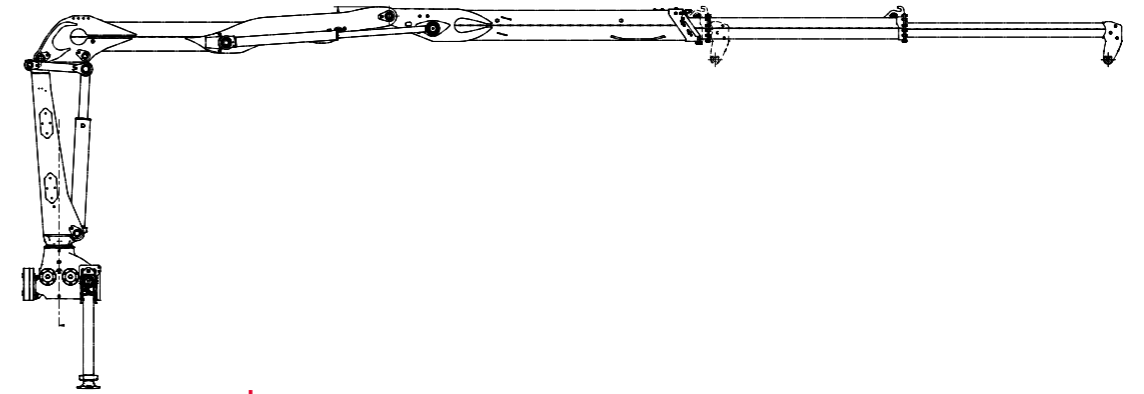
TZ20								LS	1K	2K	Weight	Telescope
TZ20.1	8,3	196 kNm	8.3 m	1.85 m	425°	29,3	28,5	120-160	80-100	2 x 75	2910 kg**	Single
TZ20.2	10,2	191 kNm	10.15 m	3.70 m	425°	29,3	28,5	120-160	80-100	2 x 75	3000 kg**	Double

TZ22XP								LS	1K	2K	Weight	Telescope
TZ22XP.1	8,3	216 kNm	8.3 m	1.85 m	425°	29,3	31,5	120-160	80-100	2 x 75	2910 kg**	Single
TZ22XP.2	10,2	212 kNm	10.15 m	3.70 m	425°	29,3	31,5	120-160	80-100	2 x 75	3000 kg**	Double

* = Weight with open operator's position.

** = Weight without open operator's position.

LIFTING FORCE** FOR RESPECTIVE REACH



CRANE VERSION		REACH							
		3 m	4 m	5 m	6 m	7 m	8 m	9 m	10 m
TL12.1	8,1	3700	2810	2280	1900	1630	1350		
TL12.2	9,7	3200	2715	2200	1820	1545	1330	1170	1060*
TZ13.1	8,5				2000	1685	1475		
TZ13.2	10,5				1920	1570	1380	1200	1100
TZ15.1	8,5				2250	1900	1650		
TZ15.2	10,5				2180	1850	1580	1400	1200
TZ16XP.1	8,5				2520	2135	1850		
TZ16XP.2	10,5				2450	2075	1785	1580	1350
TZ18.1	8,3				3100	2500	2250		
TZ18.2	10,2				2900	2400	2100	1850	1650
TZ20.1	8,3				3325	2825	2300		
TZ20.2	10,2				3240	2740	2380	2110	1700
TZ22XP.1	8,3				3665	3125	2500		
TZ22XP.2	10,2				3600	3050	2650	2350	1750

*Lifting force at 9,7 m reach for TL12.2

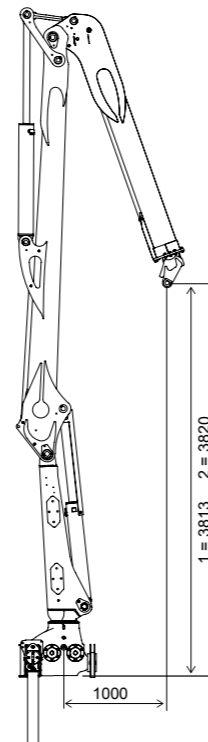
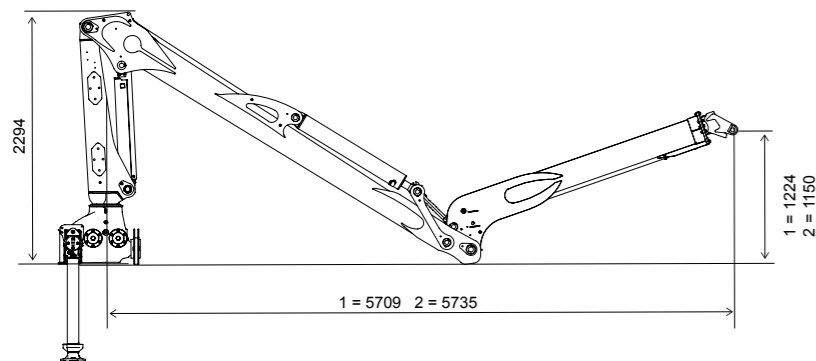
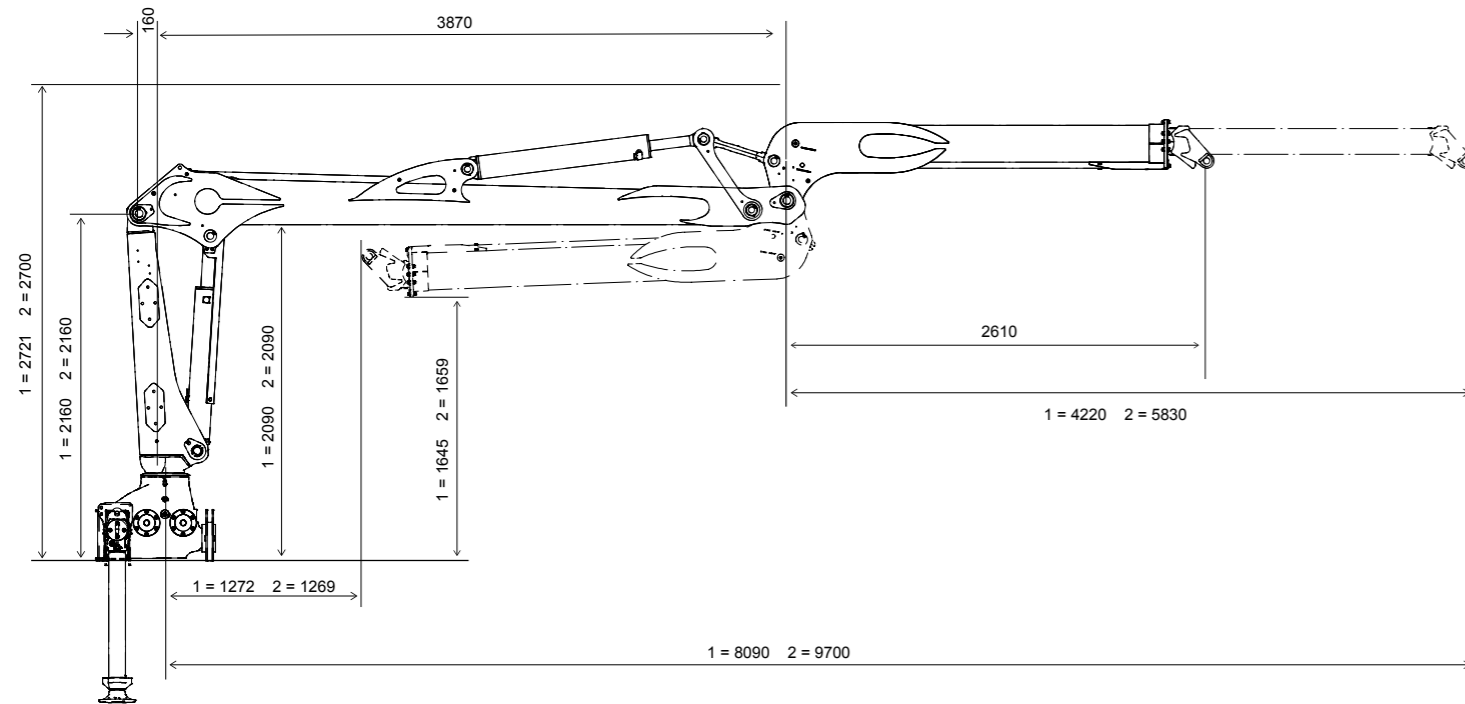
**applies to unequipped crane without e.g. grapple and rotator

CRANES

TECHNICAL DATA TL12

DIMENSIONS* TL12.1 / TL12.2

1 = TL12.1
2 = TL12.2



Because we are constantly developing and improving our products, we reserve the right to modify the data in the brochure.

We are not responsible for misprints. If you need additional information or design documentation, please contact us at Cranab.

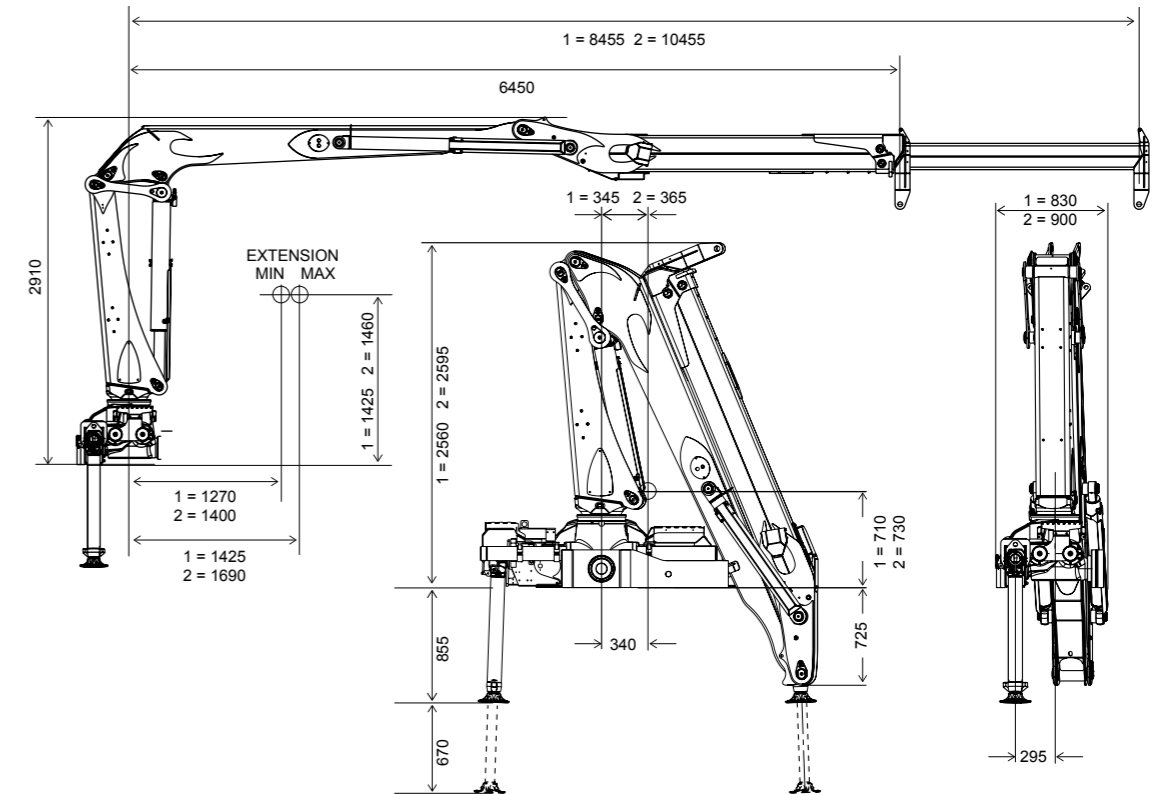
*All dimensions in mm.

CRANES

TECHNICAL DATA TZ13 | TZ15 | TZ16XP

DIMENSIONS* TZ13.1 / TZ13.2 | TZ15.1 / TZ15.2 | TZ16XP.1 / TZ16XP.2

1 = TZ13.1, TZ15.1, TZ16XP.1, TZ16XP.2
2 = TZ13.2, TZ15.2, TZ16XP.2, TZ16XP.2

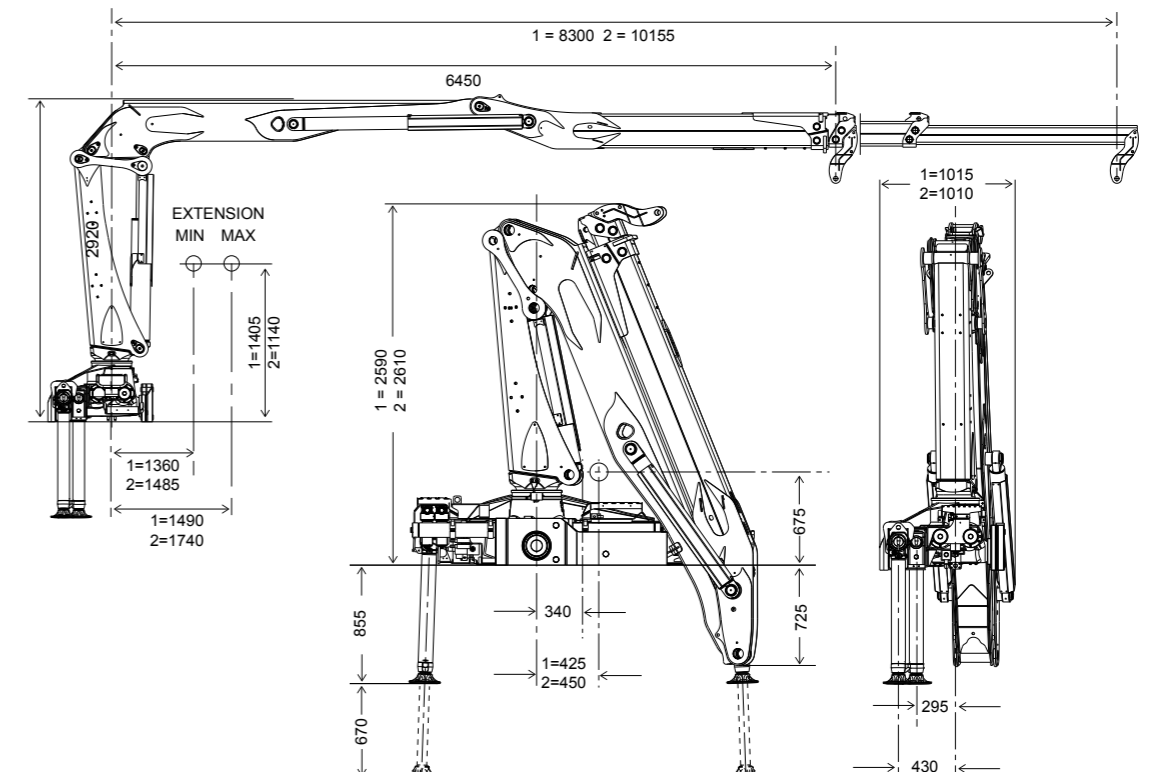


CRANES

TECHNICAL DATA TZ18 | TZ20 | TZ22XP

DIMENSIONS* TZ18.1 / TZ18.2 | TZ20.1 / TZ20.2 | TZ22XP.1 / TZ22XP.2

1 = TZ18.1, TZ20.1, TZ22XP.1
2 = TZ18.2, TZ20.2, TZ22XP.2



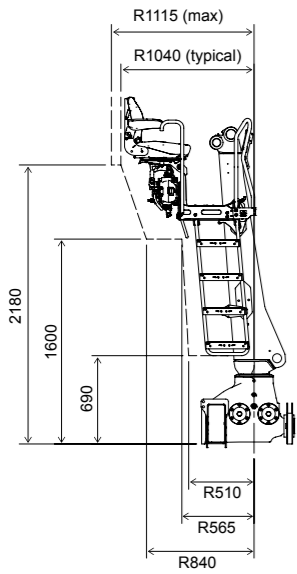
*All dimensions in mm.

The illustrations show the dimensions of a number of basic crane positions.

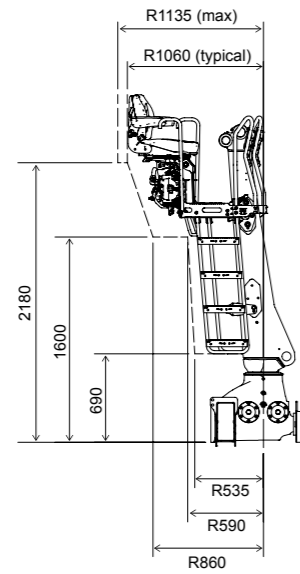
OPERATOR'S POSITION

TECHNICAL DATA TL12

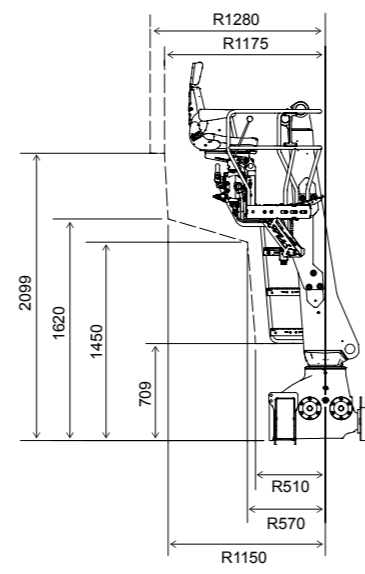
OPERATOR'S POSITION - OPEN



CENTRE MOUNTED



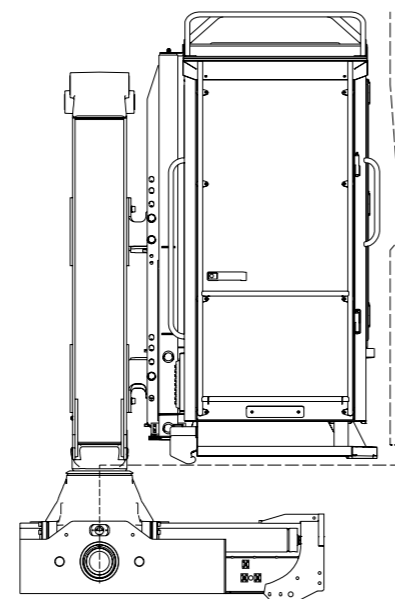
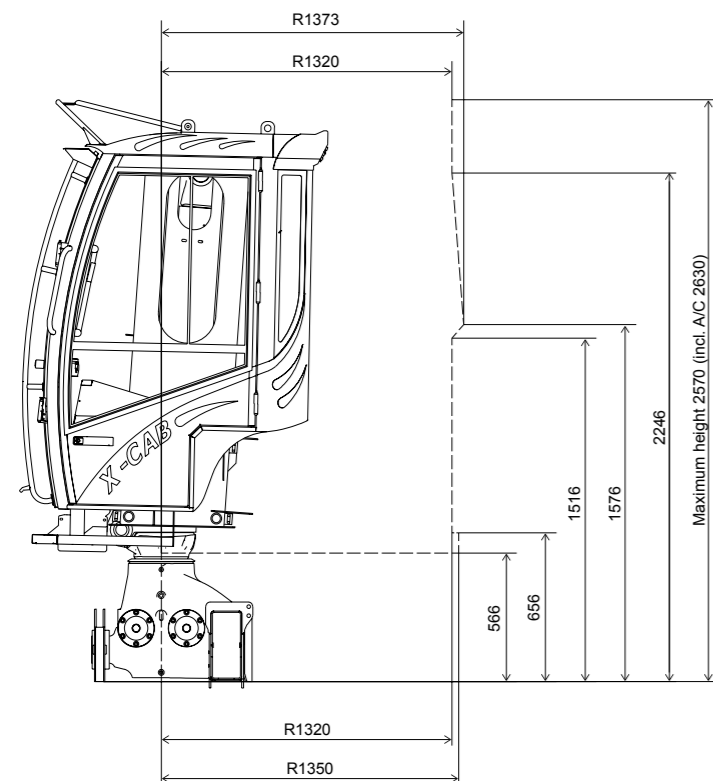
CENTRE LEFT OFFSET



LEFT & RIGHT MOUNTED

CAB

CABIN ROTATION VOLUME

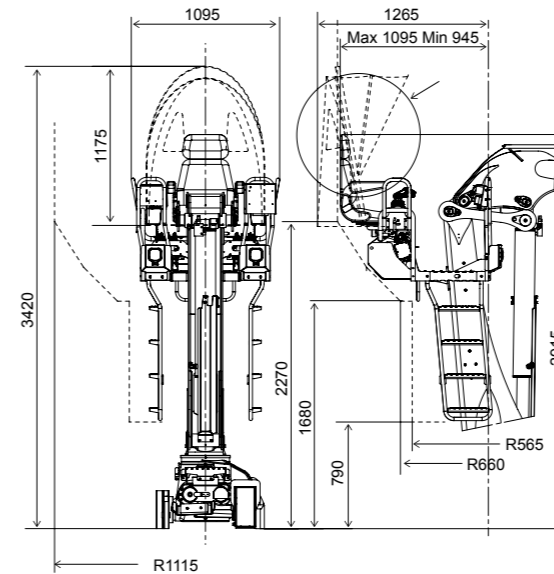


*All dimensions in mm.

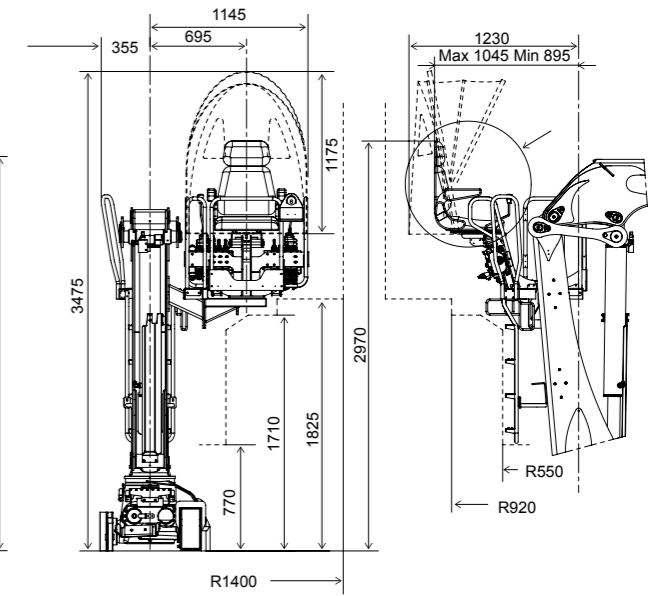
OPERATOR'S POSITION

TECHNICAL DATA
TZ13 | TZ15 | TZ16XP | TZ18 | TZ20 | TZ22XP

OPERATOR'S POSITION - OPEN



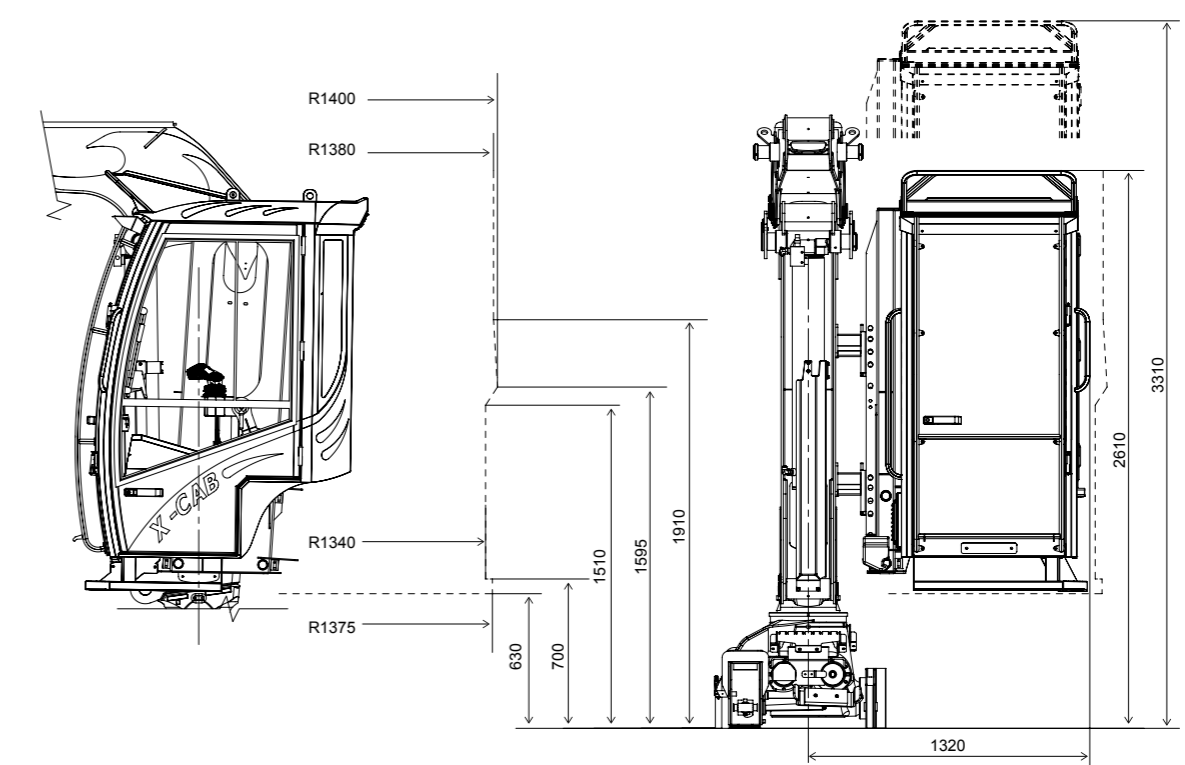
CENTRE MOUNTED



LEFT & RIGHT MOUNTED

CAB

CABIN ROTATION VOLUME



*All dimensions in mm.

Experience. Technology. Innovation.

Cranab's factories are located in Vindeln, deep in the forests of West Bothnia. It's where we develop and manufacture world-class cranes, grapples and land clearing machines.

At Cranab, we are driven by a genuine passion for forestry and road clearance technology. We are also driven by our efforts to advance development and a desire for constant improvement.

We are based in northern Sweden, but do business all over the world. We listen carefully to what our customers and users have to say and always respond to market demands. Attentiveness, 60 years of experience and sound technological know-how form the basis of our innovative products.

Cranab, which manufactures products for both Cranab and Slagkraft, is part of the Fassi Group. In addition to Cranab AB, the Swedish arm of the group also includes Vimek AB which manufactures forest machines for non-destructive thinning. Today, the two companies are among the world's leading players in their fields. Their common success factors are the development, manufacture and marketing of leading products and solutions for the latest methods and professional users in forestry and road clearing.



FASSI GROUP